

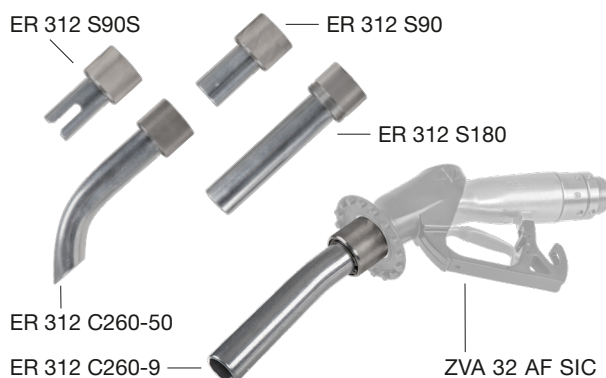
The **ZVA 32 AF SIC** is a versatile aviation nozzle designed for overwing refuelling, providing up to 200 l/min fuel, automatic shut-off and five different spouts, that are easily and quickly exchangeable directly on site. Therefore, it allows refuelling of various kinds of aircraft, helicopters, drones and other vehicles with JET, AVGAS and military fuels. **All parts in contact with fuel are free of non-ferrous metals.**



**ZVA 32 AF SIC**



**Exchangeable Spouts**



#### ► Advantages

Feature	Benefit
<b>Free of non-ferrous metals</b>	Safeguards fuel quality
<b>Exchangeable spouts</b>	Allows refuelling of various aircrafts, helicopters, drones and other vehicles
<b>Lever Lock-Out</b> (optional)	Prevents accidental lever pulling
<b>Bonding equipment</b>	For intuitive, safe and reliable bonding. Bonding cable with clamp and plug as per aviation standards (see below)
<b>Swivel joint</b>	Stainless steel EA 319 SS with roll bearing enables easy torsion free nozzle handling
<b>Strainer conical</b>	Prevents foreign matter to enter the tank
<b>Splashguard</b>	Protects user from splash backs (pressure build up in tank)
<b>Dust cap</b>	Prevents ingress of dust and dirt to enter the nozzle spout

#### ► Operating Conditions and Areas

<b>Flowrate</b>	up to 200l/min
<b>Working pressure</b>	1.5 to 6 bar
<b>Media temperature</b>	-20 °C to 40 °C (LT version: -40 °C)
<b>Ambient temperature</b>	-20 °C to 55 °C (LT version: -55 °C)
<b>Standards / Approvals</b>	<ul style="list-style-type: none"> <li>• EN 13012, ATEX (©II 1G Ex h IIA Ga) Certificate No. PS 19 ATEX 103415 0002 U and all European regulations for weights and measures</li> <li>• TÜV: P-TÜ7-00512</li> <li>• JIG / ATA Spec 103 / M83413/7-1 / M83413/4-1</li> </ul>

#### ► General Arrangement

<b>Connection</b>	1.5" BSPP male
<b>Weight</b>	2.6 kg
<b>Nominal size</b>	Inner diameter 32 mm
<b>Strainer mesh</b>	160 µm/90 mesh

#### ► Materials

<b>Body &amp; spout</b>	Aluminium
<b>Guard &amp; lever</b>	PA dissipative
<b>Internals</b>	Aluminium / stainless steel POM / PA / PEEK
<b>Swivel</b>	Stainless steel
<b>External screws</b>	Galvanized steel
<b>Scuffguard</b>	Soft PVC
<b>Seals</b>	NBR, PU

Part Number Breakdown

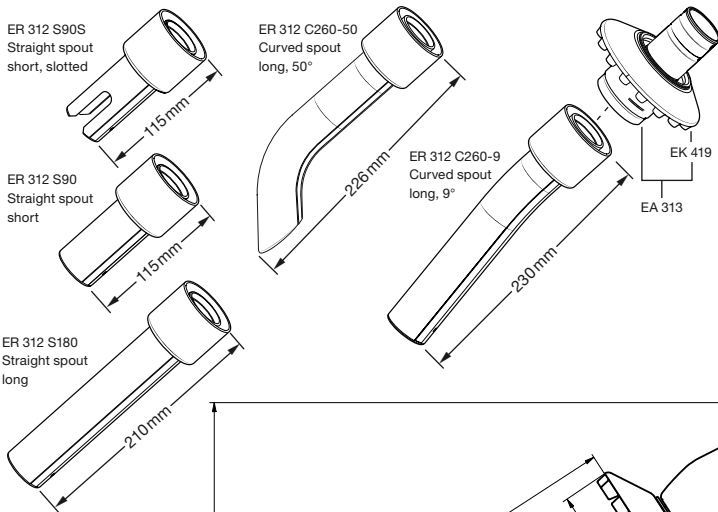
Example\*:

ZVA 32 AF SIC ... EG 281.1 AF LLO LT EK 324 EK 145 EA 319 SS GKG 32 EK 1200

Guard (Conductive and without hold-open latch)	Latch Pin	Special Type	Scuffguard	Badges	Connection	Dust Cap	Bonding Assembly
Guard 1, electrically conductive with hole for EKG + GKG without EB 280 = <b>EG 281.1 AF D</b>	Without = <b>D</b>	None = <b>(-)</b>	JET black = <b>EK 324</b>	JET black = <b>EK 145</b> (e.g. 382)	Stainless steel swivel = <b>EA 319 SS</b>	without = <b>(-)</b>	Bonding cable assembly with solid heavy stainless steel clamp and bolt. Non-corrosive wire with plastic coating, length 1200 mm. = To STANAG 3207: <b>EKG 1200.1</b> = Option: <b>EKG 1200</b> (other lengths on request)
Guard 1, electrically conductive, with block magnet with hole for EKG + GKG without EB 280 = <b>EG 281.1 M AF D</b>	Lever Lock-Out = <b>LLO</b>	Low Temperature = <b>LT</b>	AVGAS red = <b>EK 324 red</b>	AVGAS red = <b>EK 145 red AF</b>	Stainless steel swivel with Eaton's Carter® 2-inch Unisex Coupling = <b>EA 319 SS + Unisex Coupling</b>		
Guard 3, electrically conductive with hole for EKG + GKG without EB 280 = <b>EG 281.3 AF D</b>							
Guard 3, electrically conductive, with block magnet with hole for EKG + GKG without EB 280 = <b>EG 281.3 M AF D</b>							
Guard 4, electrically conductive with hole for EKG + GKG without EB 280 = <b>EG 281.4 AF D</b>							
Guard 4, electrically conductive, with block magnet with hole for EKG + GKG without EB 280 = <b>EG 281.4 M AF D</b>							
Guard 8, electrically conductive, with block magnet with hole for EKG + GKG without EB 280 = <b>EG 281.8 DM rm AF</b>							

\*Details see catalogue page 529d

Dimension of Standard Nozzle with Swivel



Nozzle Kit Case

