

Our 'HR' Hose Reel Packages are supplied with our bespoke hoses, couplings or nozzles.

- all components made by Elaflex – one supplier, one system, one liability, one price
- delivered as complete tested system including hoses, couplings and nozzles
- high quality standard, longevity, short lead times
- modular designed, various materials and colours to suit space, media and requirements

HR 'Compact Line' is fitted with spring rewind system and integrated static hose guide.

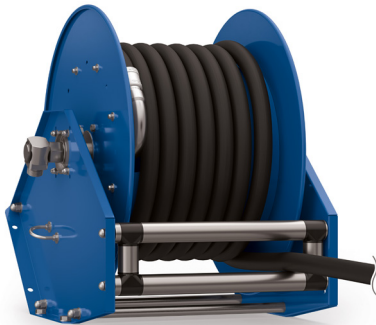
HR 'Modular Line' comes with various rewind systems (manual, electric, hydraulic, pneumatic).

Commonly used for applications such as:

- Aviation
- Marina/Ports/Ships
- Depots/Petrol Stations
- Trucks

HEAVY DUTY SPRING REWIND HOSE REELS

HR 'Compact Line 25'

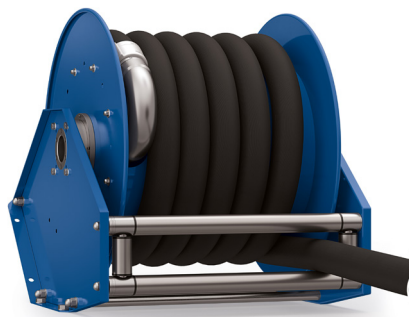


Suitable for hose sizes DN 13 - 25
(e.g. up to 40 m for DN 25)

HR Information 01E

or

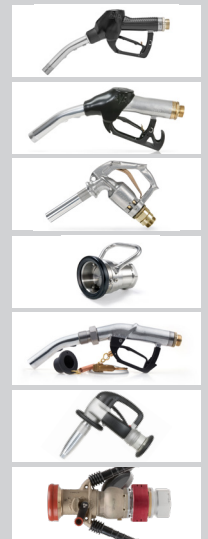
HR 'Compact Line 50'



Suitable for hose sizes DN 32 - 50
(e.g. up to 25 m for DN 50)

HR Information 02E

+



ECONOMY SPRING REWIND HOSE REELS

HR 'Compact Line T'



Suitable for hose sizes DN 13 - 25
(e.g. up to 8 m for DN 25)

HR Information 03E

or

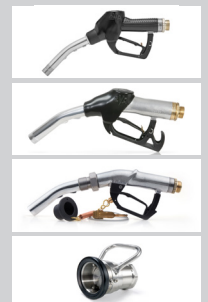
HR 'Compact Line B'



Suitable for hose sizes DN 13 - 25
(e.g. up to 20 m for DN 25)

HR Information 04E

+



Also available:
Vapour Recovery
Hose Reels
HR Information 07E

MODULAR REWIND HOSE REELS

(available with manual, electric, hydraulic, pneumatic rewind system)

HR 'Modular Line G + GB'

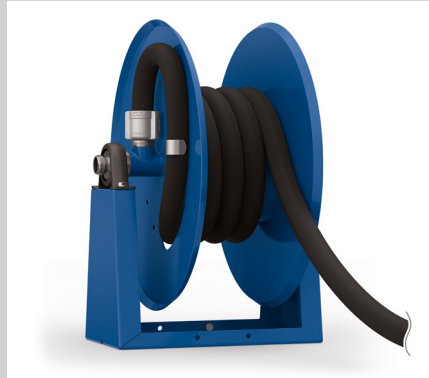


Suitable for hose sizes DN 25 - 200
(e.g. up to 40 m for DN 38)

HR Information 05E

or

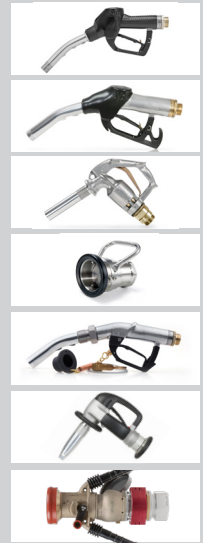
HR 'Modular Line M'



Suitable for hose sizes DN 13 - 25
(e.g. up to 50 m for DN 25)

HR Information 06E

+



Special Packages

STORAGE HOSE REELS

For Storage Only



Suitable for hoses DN 13 - 250,
for a safe and clean storage

All Types of Rewind Systems

BONDING REELS

Earthing and Bonding



Highly visible bonding cable, up to 30m,
DN 6 mm, different types of clamps

Spring Rewind

For further details and information, please contact our Sales Team.

