



100 SERIES INLINE TRAILER BREAKAWAY

Applications

Inline breakaway designed for use with high flow CNG systems such as virtual pipeline transport trailers and bulk storage.



IB108 - Inline Trailer Breakaway

Materials

Description	Material
Body	Aluminium
Seats	Delrin
Internals	304 Stainless Steel
O-rings	Nitrile
Caps	304 Stainless Steel
Adaptors	304 Stainless Steel



TOOL-IB108/HC208

Product Information

Largest CNG 1" inline breakaway on the market

SAE Ports are standard.

All products are manufactured under ISO 9001 accredited standards.

PED 97/23/EC approved.

Compliant to sections of ANSI/IAS NGV4.4-1999 except separation force is designed to comply with AS5092-2009. This makes the product more suitable for CNG transport trailer applications.

Body tested to 100,000 pressure cycles.

Easily reconnected after a breakaway event.

Adaptor fittings are available to adapt to other standard threads and are supplied assembled with breakaway unit.

Servicing tool TOOL-IB108/HC208 is available for purchase from Oasis.

Replacement male end of breakaway available for purchase separately.

Please contact Oasis if intended for use in public vehicle refuelling stations.



100 SERIES INLINE TRAILER BREAKAWAY

Product Specification

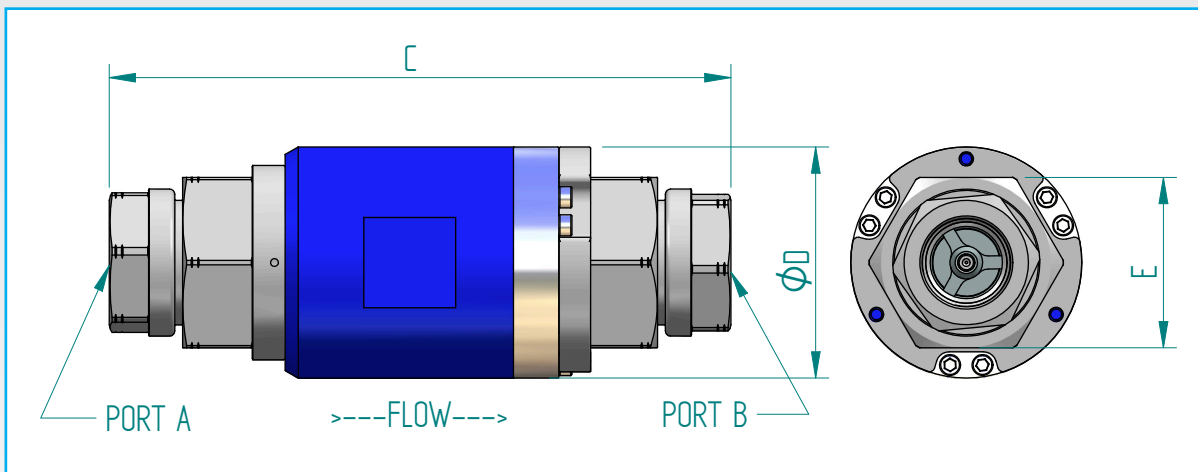
Part Code	Weight lb (kg)	Service Pressure psi (bar)	Max Pressure ** psi (bar)	Test Pressure ^ psi (bar)	Min Temp. °F (°C)	Max Temp. °F (°C)	Time Before Rekit ^^	Cv	Service kit
IB108-ASDSN	8.1 (3.7)	3600 (250)	4500 (310)	5000 (345)	-40 (-40)	150 (65)	3 Years	14.7	IB108-SKDSN

* Minimum system pressure the product will hold constant bubble tight seal at.

** Maximum pressure at which the product can constantly operate at.

^ Maximum pressure that can be applied for testing without causing damage to the product.

^^ It is recommended that the breakaway is re-kitted on or before the maximum usage duration to ensure it remains leak tight. The value of 3 years is based on a maximum of 20 uses a day, 365 days a year.



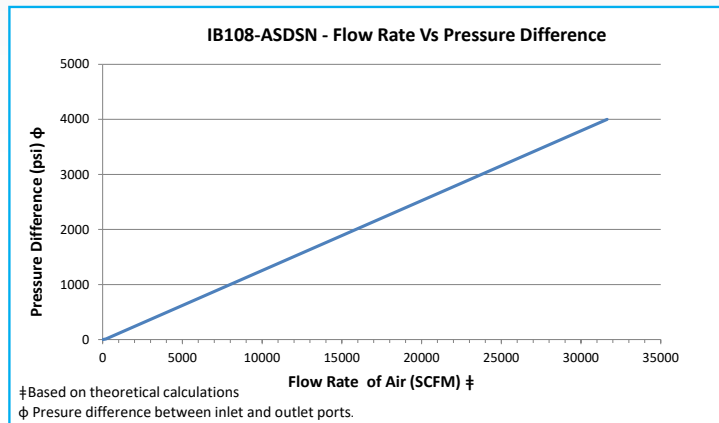
Dimensions: Imperial (Metric mm)

Part Code	PORT A	PORT B	C	D	E	BREAKAWAY FORCE
IB108-ASDSN	1 5/8 - 12 SAE*	1 5/8 - 12 SAE*	7" (180)**	3.46" (88)	2.55" (65)	500N < FORCE < 800N
IB108-ASDSN-11	1 5/16 - 12 SAE	1 5/16 - 12 SAE	9.33" (237)	3.46" (88)	2.55" (65)	500N < FORCE < 800N
IB108-ASDSN-22	3/4" NPT	3/4" NPT	9.33" (237)	3.46" (88)	2.55" (65)	500N < FORCE < 800N
IB108-ASDSN-33	1" NPT	1" NPT	9.33" (237)	3.46" (88)	2.55" (65)	500N < FORCE < 800N

* Standard Breakaway port size (No adaptor)

** Standard Breakaway length (No adaptor)

Other adaptor thread sizes available on request





100 SERIES INLINE TRAILER BREAKAWAY

Applications

Replacement IB108 male assembly



Male end replacement - IB108-4SDAN-M

Product Information

Complete replacement incase male section of breakaway is too badly damaged to be re-used.

All products are manufactured under ISO 9001 accredited standards.

Materials

Description	Material
Body	304 Stainless Steel
O-ring	Nitrile



300 Series Ultra Fast Fill Quick Coupler

Applications

Fast Flow Filling Systems, Storage Cascade to Trailer/Transporter, Trailer/Transporter connection to Daughter station and direct feed to CNG Dispensers. Suitable for CNG and Bio-Gas.



HC308-6NDDN - 1" Quick Release Coupler

Materials

Item	Description	Material
1	HC Female Body	316 Stainless Steel
2	HC Male Body	316 Stainless Steel
3	Body O-ring	Nitrile
4	Back-up	Nitrile
5	Sleeve	316 Stainless Steel
6	Sleeve Retainer	302 Stainless Steel
7	Sleeve Spring	302 Stainless Steel

Item	Description	Material
8	Segments	420 Stainless Steel
9	Poppet Stem	316 Stainless Steel
10	Poppet O-ring	Nitrile
11	Poppet Seal	Delrin
12	Poppet Retainer	316 Stainless Steel
13	Poppet Spring	302 Stainless Steel
14	Poppet Guide	316 Stainless Steel

Product Information

NPT female is standard configuration and conforms to ASME B1.20.1. For a direct manifold connection option, see 300 Series Ultra Fast Fill Quick Coupler - SAE Male.

A special adaptor is available which allows standard male couplers to fit in most Type 4 TITAN® trailers, see TITAN® Trailer Adapter.

Male and female are sold individually.

All products are manufactured to ISO 9001 standards.

Designed and tested to ISO7241 Series B Profile and is connectable with Oasis HC208 couplers.

PED 97/23/EC approved.

CRN (0A1257.987421) approved for Prince Edward Island, New Brunswick, Nova Scotia, Manitoba, Alberta and British Columbia, other areas pending.

Designed to be uncoupled/coupled at atmospheric pressure (0psi gauge) only.

More product information available online at www.oasisngv.com

Features & Benefits

Industry leading flow rates.

Anti-leak spring loaded poppets instantly stops gas flow when disconnected, greatly increasing safety and reducing the amount of debris entering the system.

Specifically designed for high pressure CNG use.

Stainless steel construction gives corrosion and wear resistance.

Hardened segment connection style increases gripping surface area. This significantly reduces wear on male couplings.

A high disconnection force is required to disconnect at pressure making accidental disconnection very difficult, improving the safety of the device.

Integrated lock in place sleeve to ensure correct coupling is achieved.

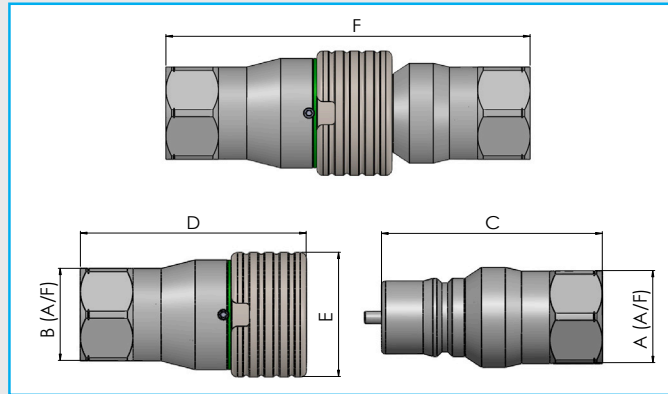
A green ring is visible on female only when the device is correctly coupled, improving the visual confirmation that it is correctly joined to a male before pressurizing.

Male coupler includes recommended dust cap.

Service kits are readily available & easy to install.



300 Series Ultra Fast Fill Quick Coupler



Dimensions: Imperial (mm)

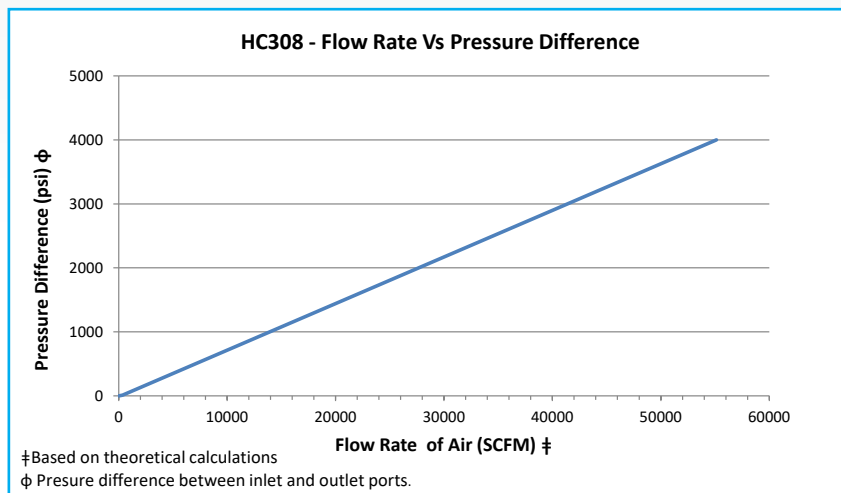
Part Code	Nominal Size	A (A/F)	B (A/F)	C	D	E	F	Threads
HC308-6NDDN-M	1"	1.89" (48)	-	4.3" (109.3)	-	-	7.1" (180.3)	1" NPT Female
HC308-6NDDN-F	1"	-	1.89" (48)	-	4.4" (111.8)	2.55" (64.8)	7.1" (180.3)	1" NPT Female

-M Male Part
-F Female Part

Product Specification

Part Code	Mass lb (kg)	Min. Operating Pressure bar (psi) *	Max. Operating Pressure bar (psi) **	Min. Temp. °F (°C)	Max. Temp. °F (°C)	Cycles Before Rekit [^]	Cv ^{^^}	Service Kit
HC308-6NDDN-M	2.2 (1)	6.9 (100)	345 (5000)	-40 (-40)#	185 (85)	20,000	23	HC308-SKDDN-M
HC308-6NDDN-F	3 (1.4)	6.9 (100)	345 (5000)	-40 (-40)#	185 (85)	20,000	23	HC308-SKDDN-F

- * Minimum system pressure the product will hold constant bubble tight seal.
- ** Maximum pressure at which the product can continuously operate at.
- ^ It is recommended that the coupler is re-kitted on or before the maximum number of allowable cycles.
- ^^ CV measured when coupled to corresponding Oasis coupler.
- # Coupler bodies and structural components are made from 316 Stainless steel to ensure pressure vessel suitability to -100°F. Contact us if you require more information about suitability at these low temperatures.
- M Male Part
- F Female Part





300 Series Ultra Fast Fill Quick Coupler

HC308 Dust Cap

The Oasis Dust Cap has been designed to protect the HC308 Male Coupler from damage, dust and debris. Oasis recommends the use of the dust cap to maintain the life of the product.

Product Information

For use with HC308-6NDDN-M only.

Included with all male couplers.

Used to keep dust and debris out of the couplers and the system.

Slim design ensures male coupler can still be used with TITAN® trailers.

Durable plastic design.

Available for purchase separately.



HC308-DC - 1" Quick Release Coupler Dust Cap

Retainer Tool

Tool required to complete servicing of coupler. Designed to fit over poppet retainer for easy removal and installation.

Product Information

Made from 4140 Steel.

Sold Separately.

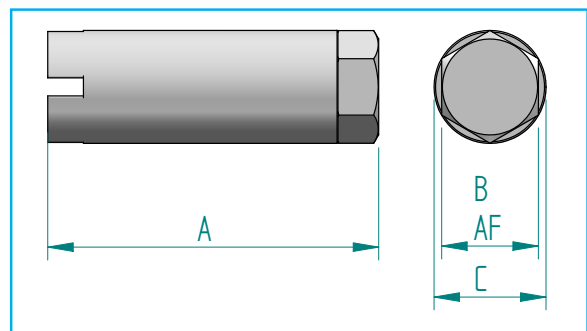
Tightening torque stamped on body.



HC308-TOOL - Service tool

Dimensions: Imperial (mm)

Part Code	A	B AF	C
TOOL-HC308	2.56"(65)	3/4"(19)	0.87"(22)



We reserve the right to modify product specifications without prior notice.



300 Series Ultra Fast Fill Quick Coupler

HC308 Dummy Male

Dummy male fitting to hold HC308 Female Coupler off the ground when not in use. Oasis recommends the use of this product to avoid damage to the female coupler.

Product Information

Made from durable plastic.

Fits into female coupler like a standard male coupler.

Designed to be bolted in place using a 1/4" (6mm) cap screw.

Sold separately.



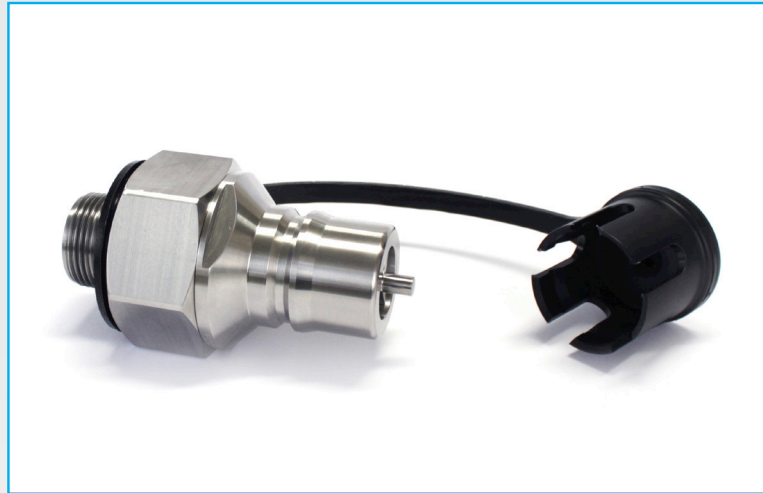
SHC308-18 - Dummy Male



300 Series Ultra Fast Fill Quick Coupler - SAE Male

Applications

Fast Flow Filling Systems, Storage Cascade to Trailer/Transporter, Trailer/Transporter connection to Daughter station and direct feed to CNG Dispensers. Suitable for CNG, Bio Gas, Nitrogen and Air.



HC308-6DDDN-M - 1" Ultra Fast Fill Quick Coupler - SAE Male

Materials

Item	Description	Material
1	HC Male Body	316 Stainless Steel
2	HC Male End Cap	316 Stainless Steel
3	Body O-ring	Nitrile
4	Back-up	Nitrile
5	SAE O-ring	Nitrile
6	Poppet Stem	316 Stainless Steel

Item	Description	Material
7	Poppet O-ring	Nitrile
8	Poppet Seal	Delrin
9	Poppet Retainer	316 Stainless Steel
10	Poppet Spring	302 Stainless Steel
11	Poppet Guide	316 Stainless Steel
12	Dust Cap	Nylon

Product Information

SAE male thread to SAE J1926-2 Heavy Duty standard.

All products are manufactured to ISO 9001 standard.

Designed and tested to ISO7241 Series B Profile and is connectable with Oasis HC208 couplers.

PED 97/23/EC approved.

Designed to be uncoupled/coupled at atmospheric pressure (0psi gauge) only.

Recommended for use with Oasis HC308 Female Coupler, see 300 Series Ultra Fast Fill Quick Coupler.

More product information available online at www.oasisngv.com

Features & Benefits

Industry leading flow rates.

Male SAE thread allows for direct connection to trailer manifolds without the need for fittings or adapters. This reduces the number of potential leak points in the system.

Compact design makes coupler compatible with all TITAN® trailers, where the manifold is close to the trailer doors.

Anti-leak spring loaded poppets instantly stops gas flow when disconnected, greatly increasing safety and reducing the amount of debris entering the system.

Specifically designed for high pressure CNG use.

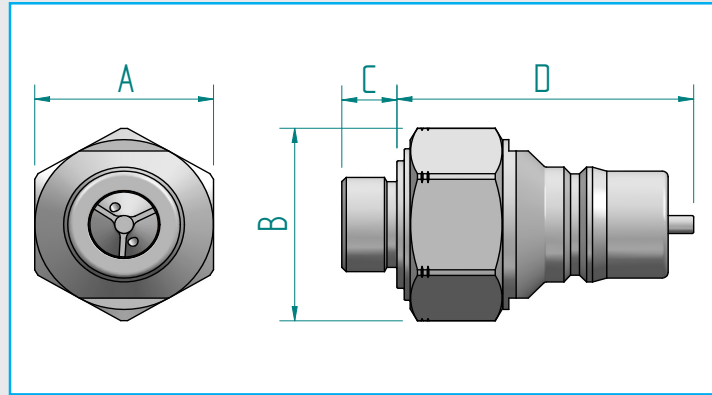
All stainless steel construction gives corrosion and wear resistance.

All male couplers supplied with recommended dust cap.

Service kits are readily available & easy to install.



300 Series Ultra Fast Fill Quick Coupler - SAE Male



Dimensions: Imperial (mm)

Part Code	Nominal Size	A (A/F)	B	C	D	Threads
HC308-6DDDN-M	1"	2.36" (60)	2.68" (68)	0.73" (18.5)	3.59" (99.6)	1 5/16"-12 SAE Male

-M Male Part

Product Specification

Part Code	Mass lb (kg)	Min. Operating Pressure bar (psi) *	Max. Operating Pressure bar (psi) **	Min. Temp. °F (°C)	Max. Temp. °F (°C)	Cycles Before Rekit [^]	Cv ^{^^}	Service Kit
HC308-6DDDN-M	2.7 (1.2)	6.9 (100)	345 (5000)	-40 (-40)	185 (85)	20,000	23	HC308-SKDDDN-M

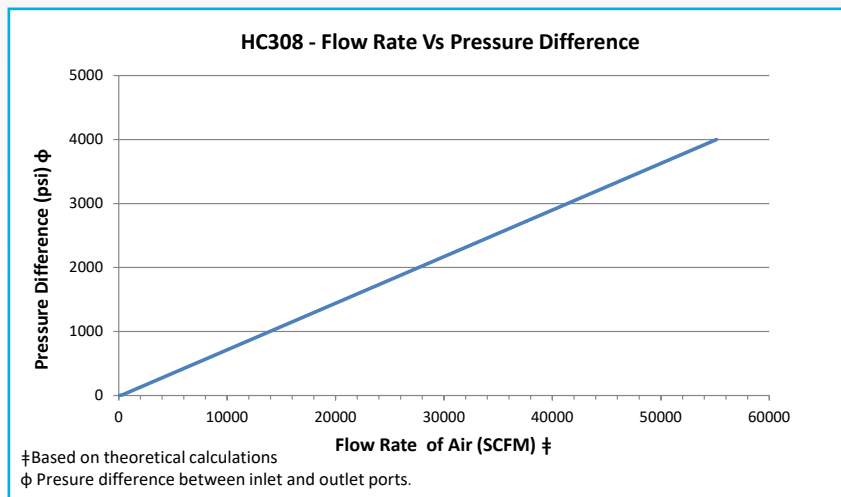
* Minimum system pressure the product will hold constant bubble tight seal.

** Maximum pressure at which the product can continuously operate at.

[^] It is recommended that the coupler is re-kitted on or before the maximum number of allowable cycles.

^{^^} Cv measured when coupled to corresponding Oasis coupler.

-M Male Part





300 Series Ultra Fast Fill Quick Coupler - SAE Male

HC308 SAE Male Dust Cap

The Oasis Dust Cap has been designed to protect the HC308 SAE Male Coupler from damage, dust and debris. Oasis recommends the use of the dust cap to maintain the life of the product.

Product Information

For use with HC308-6DDDN-M only.

Included with all male couplers.

Used to keep dust and debris out of the couplers and the system.

Slim design ensures dust cap can still be used with TITAN® trailers.

Durable plastic design.

Available for purchase separately.



HC308-SDC - 1" Ultra Fast Fill Quick Coupler - SAE Male Dust Cap



100 Series Electrical Isolating Couplers

Applications

Between all CNG Compressor Stations, Storage Vessels, Transport Units and Dispensers.



EC104-4QN / EC106-4QN / EC108-4QN

Materials

Item	Part	Material
1	Male Body	304 Stainless steel
2	Female Body	304 Stainless steel
3	Body Nut	304 Stainless steel
4	Isolating Flange	Acetal
5	Isolating Washer	Acetal
6	O Rings	Nitrile

Features & Benefits

Often the flow of gases along a pipe creates static electricity. The Electrical Isolating Couplers isolate pipe sections without inhibiting flow rates.

Reduces the corrosion on pipes for underground installations.

Minimal back pressure on gas pipe systems.

Fully serviceable.

Product Information

Tested for burst & proof.

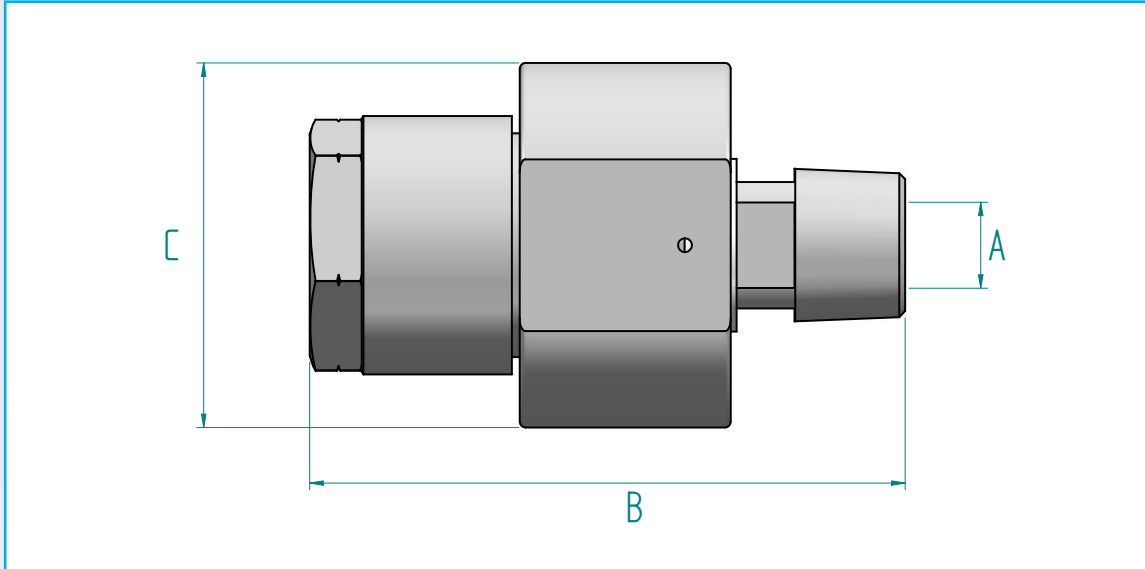
NPT Male - NPT Female is standard quoted connection. SAE, BSP & “weld in” ends available or as per customer request.

All products are manufactured to ISO 9001 standards.

Complies with all Intertanional CNG industry Best Practices Codes.



100 Series Electrical Isolating Couplers



Dimensions (mm)

Part	Size	A	B	C	Connections
EC104-4QN	3/8"	10	86.2	44.3	1/2" NPT Female - 1/2" NPT Male
EC106-4QN	1/2"	15	103	63.5	3/4" NPT Female - 3/4" NPT Male
EC108-4QN	3/4"	22	129.3	74	1" NPT Female - 1" NPT Male

Product Specification

Part Code	Mass lb (kg)	Max. Operating Pressure bar (psi) *	Min. Temp. °F (°C)	Max. Temp. °F (°C)	Service Kit
EC104	1.1 (0.5)	410 (6000)	-40 (-40)	185 (85)	EC104-SK
EC106	2.2 (1)	410 (6000)	-40 (-40)	185 (85)	EC106-SK
EC108	3.4 (1.5)	410 (6000)	-40 (-40)	185 (85)	EC108-SK

* Maximum pressure at which the product can continuously operate at.