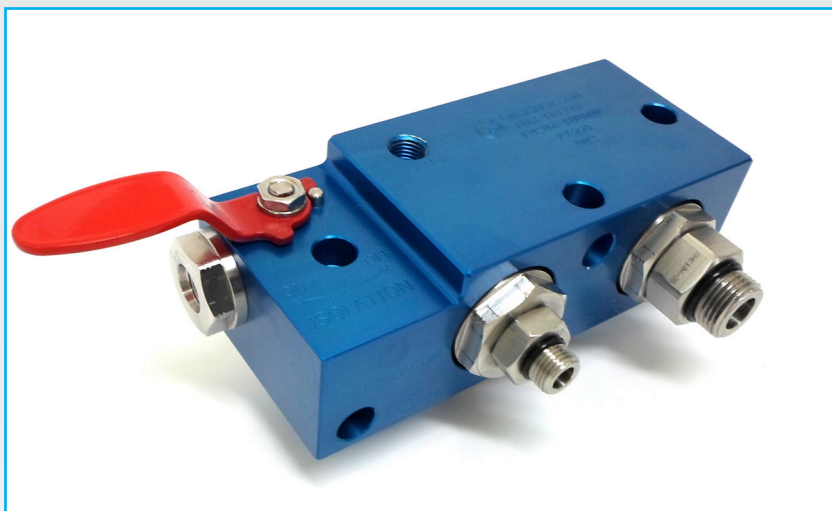




200 Series Fuel Manifold

Applications

Dual receptacle Bus and truck refilling fuel manifold for CNG and Bio-Gas, allowing utilization of both NGV1 and bus/truck nozzles.



FM204 Fuel Manifold

Materials

Description	Material
Valve Body	Aluminium
Seats and Glands	Delrin
Ball and Stem	316 Stainless Steel
O-rings	Nitrile
Valve Caps	304 Stainless Steel
Adaptors	304 Stainless Steel
Springs	302 Stainless Steel

Product Information

High flow fuel manifold for bus and truck applications.

SAE Ports to engine and storage cylinders.

To be used with NGV1 and bus/truck Receptacles (Not included).

Suitable for CNG.

NFPA52 compliant.

All products are manufactured under ISO 9001 accredited standards.

To be used with receptacles with a back flow check valve only.

Video servicing instructions available online at oasisngv.com/resources.

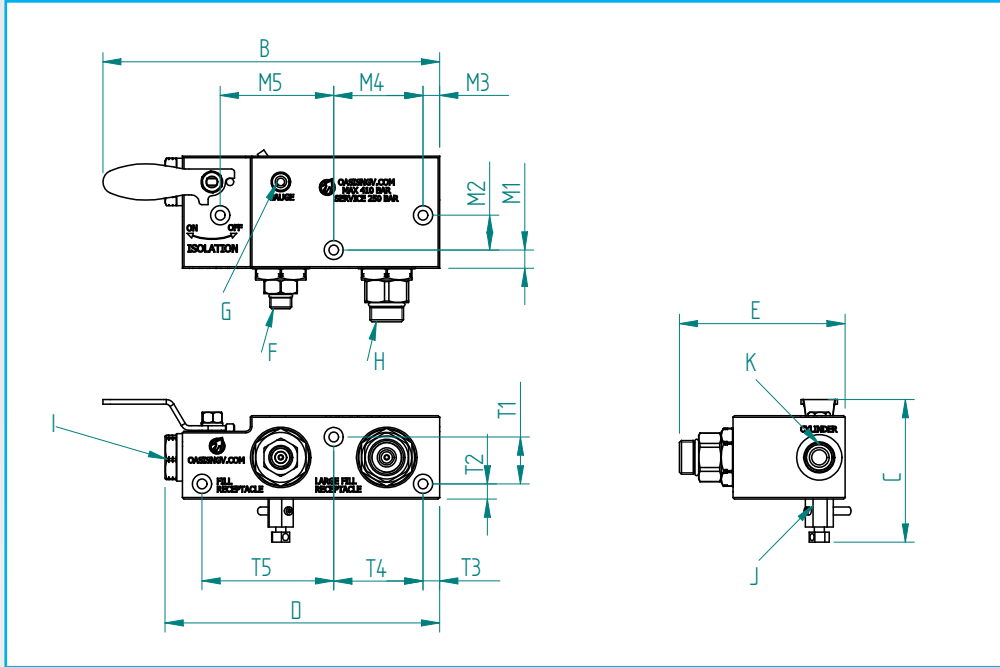
Oasis recommends that the manifold is enclosed to prevent damage or premature wear.

Product Specification

Part Code	Mass lb (kg)	Min. Operating Pressure psi (bar)	Service Pressure psi (bar)	Max. Test Pressure psi (bar)	Min Temp. °F (°C)	Max Temp. °F (°C)	Cycles Before Rekit	Cv	Service kit
FM204-100A00-1000	4.6 (2.1)	500 (34)	3600 (250)	6000 (410)	-40 (-40)	185 (85)	100,000	5.4	FM204-SK



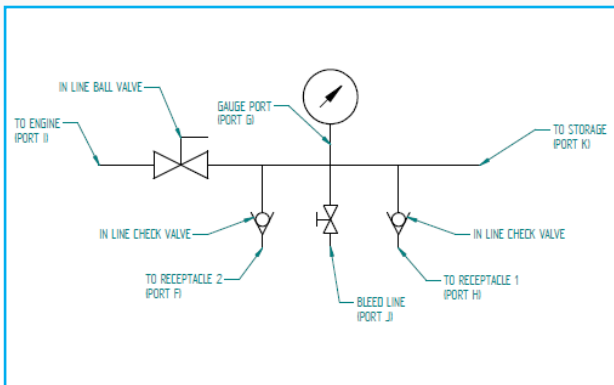
200 Series Fuel Manifold



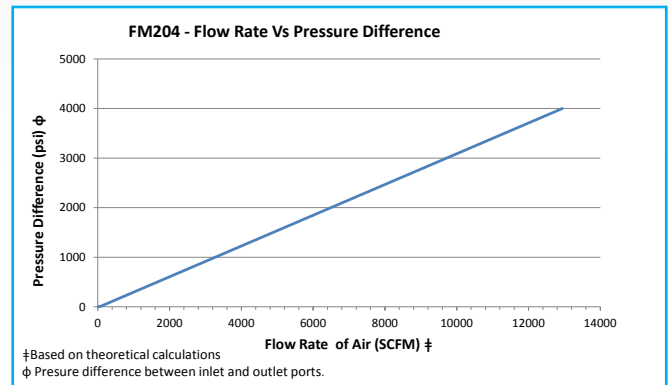
Part Code	Size	A	B	C	D	E	M1	M2	M3	M4	M5	T1	T2	T3	T4	T5
FM204-100A00-1000	1/2"	4.33" (110)	8.78" (223)	3.7" (94)	7.13" (181)	4.29" (109)	0.47" (12)	0.91" (23)	0.43" (11)	2.32" (59)	2.95" (75)	1.24" (31)	0.39" (10)	0.43" (11)	2.32" (59)	3.43" (87)

Part Code	PORT F (NGV1)	PORT G (GAUGE)	PORT H (BUS AND TRUCK)	PORT I (ENGINE)	PORT J (VENT)	PORT K (STORAGE)
FM204-100A00-1000	9/16-18 SAE MALE	1/4" NPT FEMALE	7/8-14 SAE MALE	9/16-18 SAE FEMALE	WITH VENT	3/4-16 SAE FEMALE

P&ID



Flow

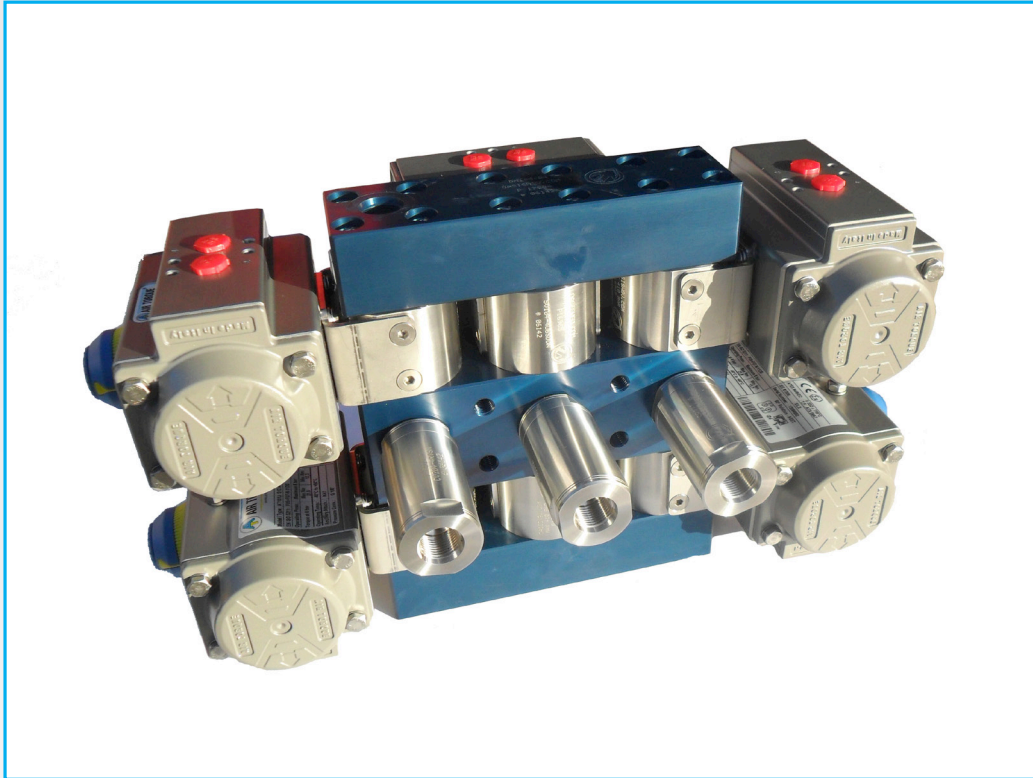




100 Series CNG Dispenser Manifold

Applications

CNG Dispenser



Materials

Item	Part	Material
1	Blocks	6061 Aluminum
2	Actuator Brackets	304 Stainless steel
3	Sandwich Valves	As per standard specifications
4	Check Valves	As per standard specifications
5	Actuator	As per manufacturer specifications

Features & Benefits

Service kits are readily available & easy to install.

CNC machining allows tighter tolerances to be maintained, which extends the working life of the components.

The complete Oasis range has been cycle tested to ensure **LOWEST LIFE COST.**

All products are manufactured to ISO 9001 standards.

Product Specification

Part Code	Mass lb (kg)	Min. Operating Pressure bar (psi) *	Max. Operating Pressure bar (psi)**	Min. Temp. °F (°C)	Max Temp. °F (°C)	Cycles Before Rekit ^	Stem Open Torque ft-lb (Nm)^^^	Cv
DM104-84	22.2 (10)	34 (500)	410 (6000)	-40 (-40)	185 (85)	100,000	3.3 (4.5)	3.5

* Minimum system pressure the product will hold constant bubble tight seal.

** Maximum pressure at which the product can constantly operate at.

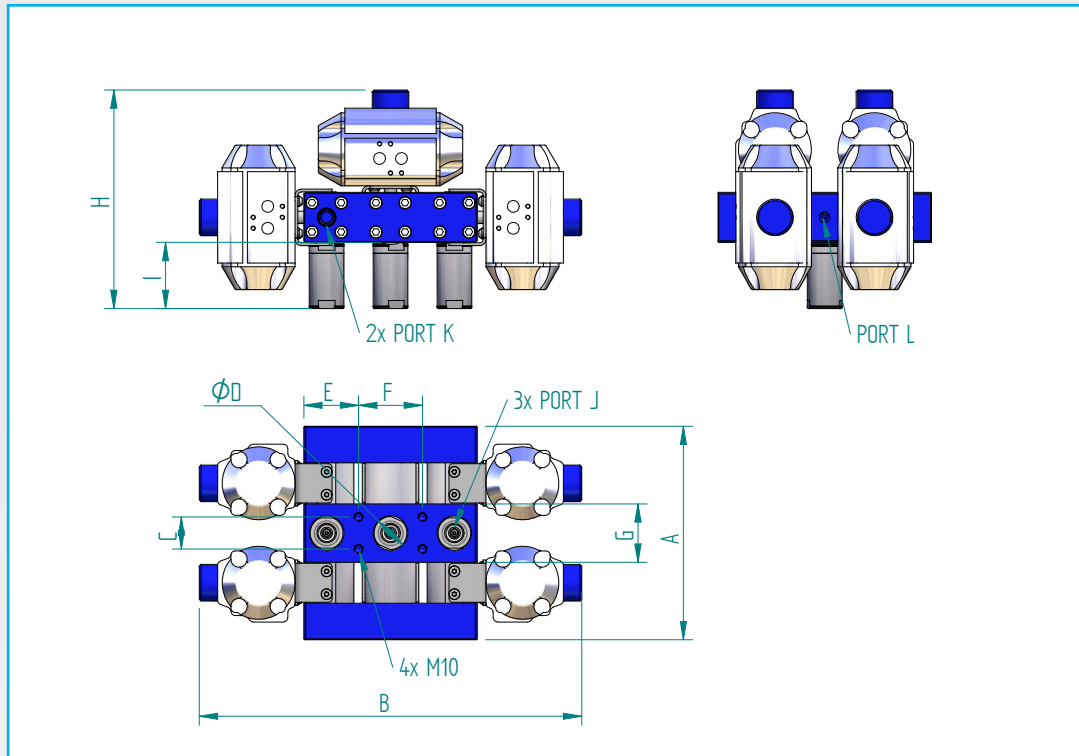
^ It is recommended that the dispenser manifold is re-kitted on or before the maximum number of allowable cycles.

^^ Opening Torque at 6,000 psi

We reserve the right to modify product specifications without prior notice.



100 Series CNG Dispenser Manifold



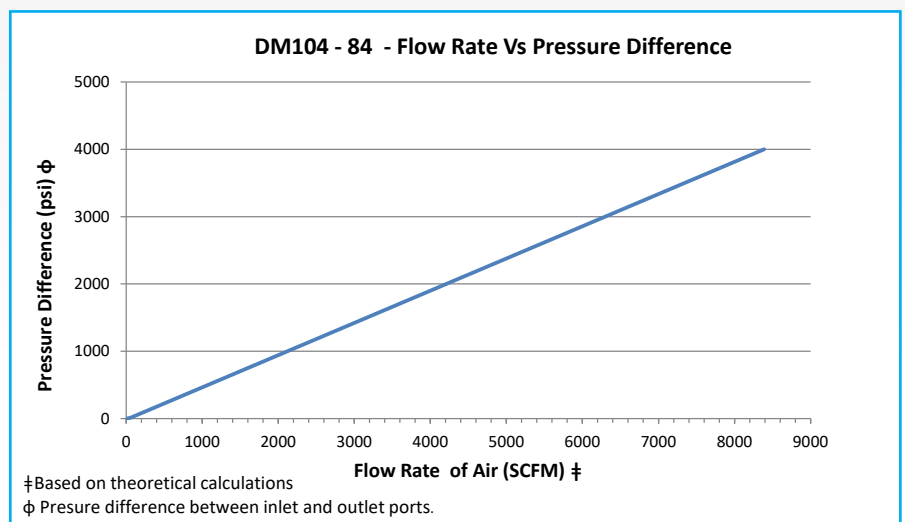
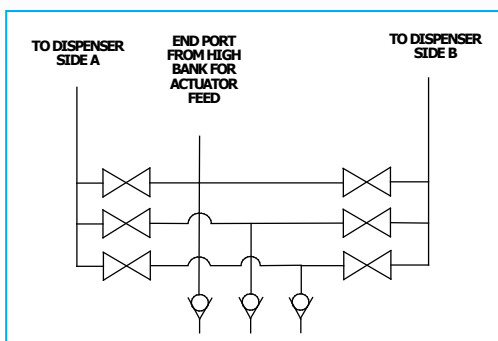
Dimensions (mm)

Part Code	Size	A	B	C	Ø D	E	F	G	H	I	PORT J	PORT K	PORT L
DM104-84	1/2"	234	420	35	38	60	70	64	240	73	3/4 - 16 SAE FEMALE	3/4 - 16 SAE FEMALE	1/4" NPT FEMALE

Port Descriptions

Port Identification	Port description
PORT J	H, M, L supply
PORT K	To dispenser (side A/B)
PORT L	Actuator feed

P & ID

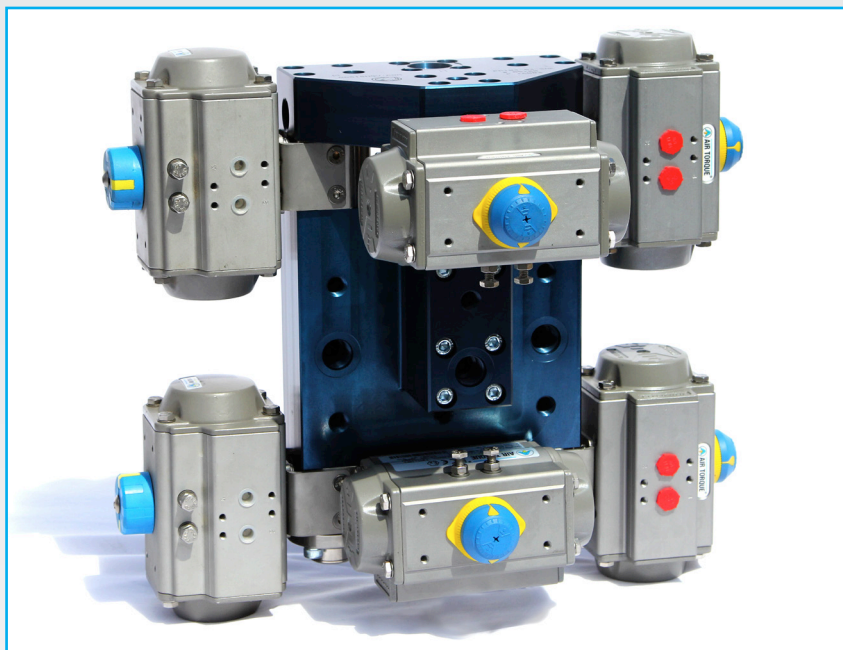




100 Series CNG Priority Manifold

Applications

CNG Priority Panel, for use in dispensing stations



Materials

Item	Part	Material
1	Blocks	6061 Aluminium
2	Actuator Brackets	304 Stainless steel
3	Sandwich Valves	As per standard specifications
4	Check Valves	As per standard specifications
5	Actuator	As per manufacturing specifications

Features & Benefits

Service kits are readily available & easy to install.

CNC machining allows tighter tolerances to be maintained, which extends the working life of the components.

The complete Oasis range has been cycle tested to ensure **LOWEST LIFE COST**.

All products are manufactured to ISO 9001 standards.

More product information available online at oasisngv.com/resources.

Product Specification

Part Code	Mass lb (kg)	Min. Operating Pressure bar (psi) *	Max. Operating Pressure bar (psi) **	Min. Temp. °F (°C)	Max Temp. °F (°C)	Cycles Before Rekit ^	Stem Open Torque ft-lb (Nm)^^	Cv
PM104-STD-SAE-ASM	(36) 16.5	34 (500)	410 (6000)	-40 (-40)	185 (85)	100,000	3.3 (4.5)	3.3
PM104-TLB-SAE-ASM	(36) 16.5	34 (500)	410 (6000)	-40 (-40)	185 (85)	100,000	3.3 (4.5)	3.3

* Minimum system pressure the product will hold constant bubble tight seal.

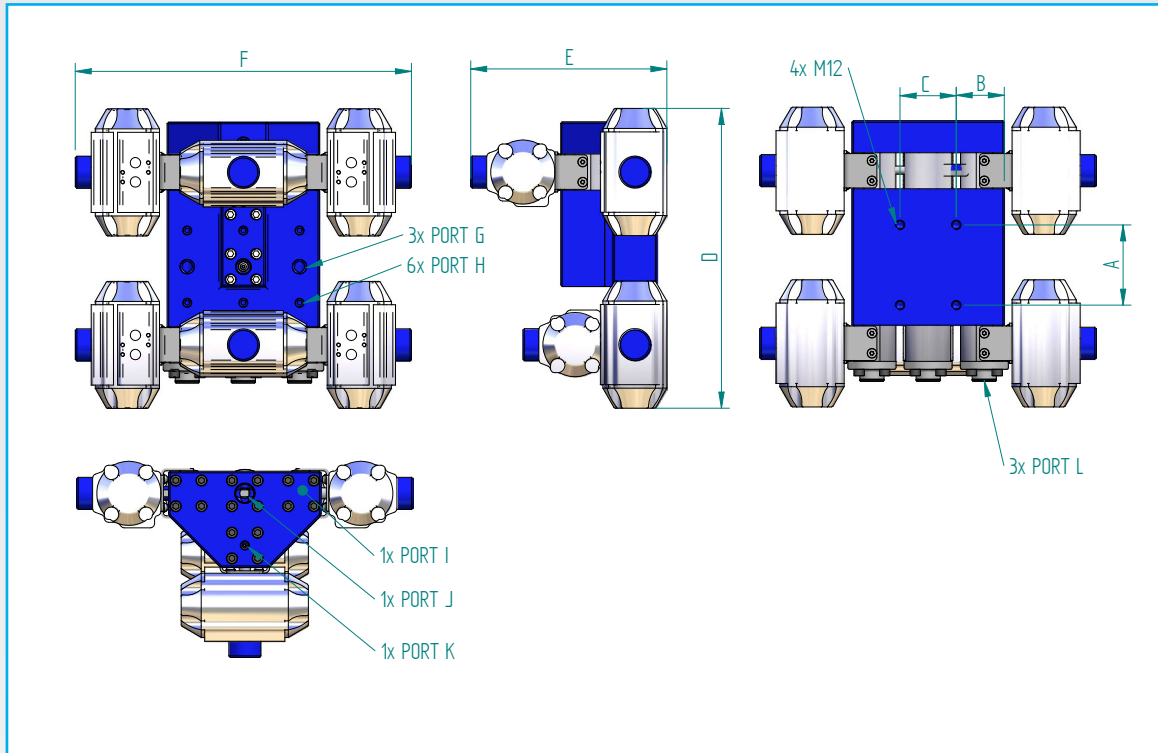
** Maximum pressure at which the product can constantly operate at.

^ It is recommended that the priority panel is re-kitted on or before the maximum number of allowable cycles.

^^ Opening Torque at 6,000 psi



100 Series CNG Priority Manifold



Dimensions (mm)

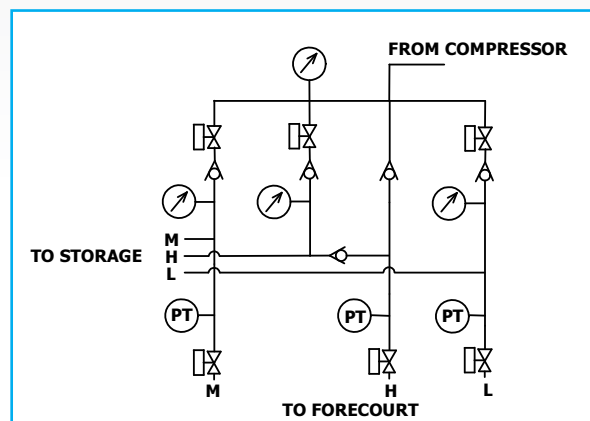
Part Code	Size	A	B	C	D	E	F
PM104-STD-SAE-ASM	1/2"	100	60	70	374	245	420
PM104-TLB-SAE-ASM	1/2"	100	60	70	374	245	420

Part Code	PORT G	PORT H	PORT I	PORT J	PORT K	PORT L
PM104-STD-SAE-ASM	3/4 - 16 SAE	1/4" NPT	N/A	1 1/16 - 12 SAE	1/4" NPT	3/4 - 16 SAE
PM104-TLB-SAE-ASM	3/4 - 16 SAE	1/4" NPT	1 1/16 - 12 SAE	1 1/16 - 12 SAE	1/4" NPT	3/4 - 16 SAE

Port Descriptions

Port Identification	Port description
PORT G	H, M, L supply
PORT H	Pressure transducer and gauge ports
PORT I	Low pressure trailer supply
PORT J	From compressor
PORT K	Pressure gauge port
PORT L	To forecourt

P & ID





100 Series Trailer Load/Unload Manifold

Applications

Suitable for CNG, Hydrogen, Helium, Bio-Gas, Nitrogen and Air

Bulk gas trailers

Bulk gas cylinder storage stacks

Gas vehicle cylinder stacks

Fast fill cylinder stacks

Product Information

All products are manufactured to ISO 9001 standards.

Quarter turn handle.

Suitable with Oasis 1" quick connect couplers.

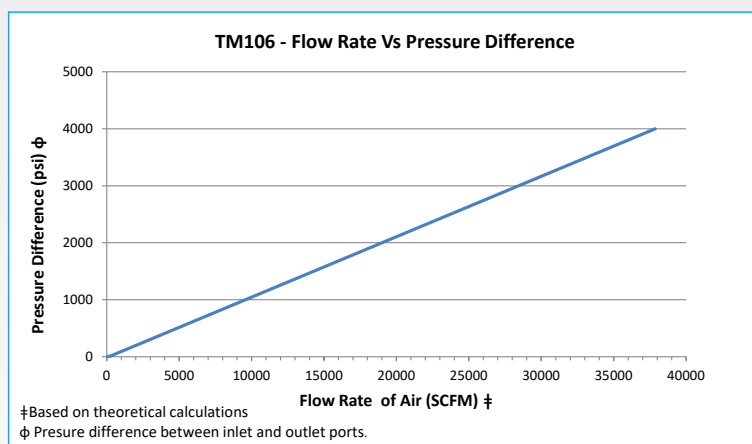
Can be manufactured to your specifications, contact us for details.



TM106-4A62DDN-E000

Materials

Part	Material
Body/Cap	304 Stainless steel
Handle	304 Stainless Steel
Ball and Stem	316 Stainless steel
O-rings	Nitrile
Seats and Glands	Delrin



Product Specification

Part Code	Size	Mass lb (kg)	Min. Operating Pressure bar (psi) *	Max. Operating Pressure bar (psi) **	Min. Temp. °F (°C)	Max. Temp. °F (°C)	Cycles Before Rekit ^	Stem Open Torque ft- lb (Nm) ^^	Cv	Service Kit
TM106-4A62DDN-E000	3/4"	14.3(6.5)	0.5 (7)	410 (6000)	-40 (-40)	185 (85)	100,000	31(22.8)	15.8	TM106-SK62DDN-S

* Minimum pressure that the product will hold constant bubble tight seal.

** Maximum pressure at which the product can continuously operate at.

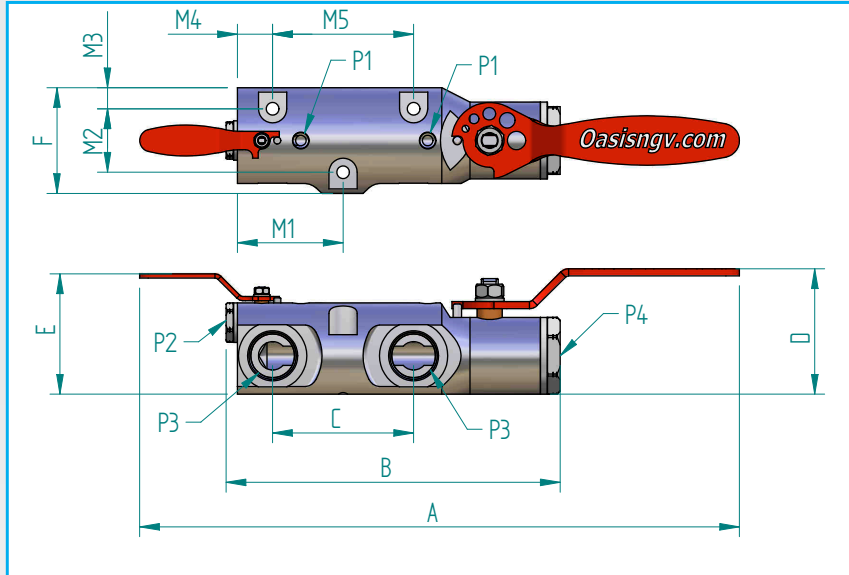
^ It is recommended that the trailer manifold is re-kitted on or before the maximum number of allowable cycles.

^^ Opening torque of main valve at 6,000 psi



100 Series Trailer Load/Unload Manifold

Product Specifications



TM106-4A62DDN-E000

Dimensions: Imperial (Metric mm)

Part Code	A	B	C	D	E	F	PORT P1	PORT P2	PORT P3	PORT P4
TM106-4A62DDN-E000	16.75" (425.5)	9.3" (237)	3.93" (100)	3.5" (89)	3.4" (85.3)	2.9" (75)	1/4" NPT Female	1/4" NPT Female	1 5/16-12" SAE Female	1 5/16-12" SAE Female

Mounting Dimensions: Imperial (Metric mm)

Part Code	M1	M2	M3	M4	M5	M6
TM106-4A62DDN-E000	2.95" (75)	1.77" (45)	.59" (15)	.98" (25)	3.94" (100)	.35" (9)

P&ID

P1 = Gauge Port/Spare Gauge Port

P2 = Vent Port

P3 = To/From Storage

P4 = To/From Storage

